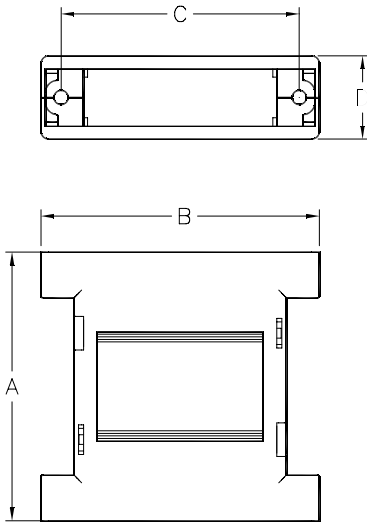


201 SERIES GENDER CHANGER COVERS

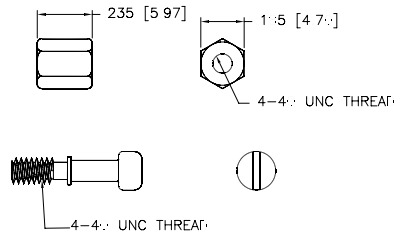


FEATURES:

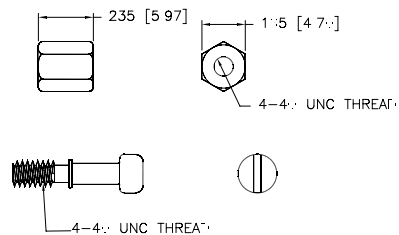
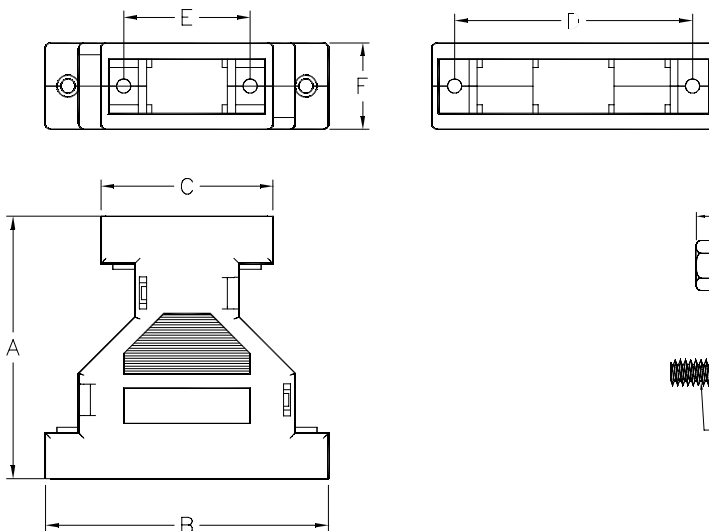
- Two-piece quicklock design.
- Available in Gray or Black.
- Includes hardware for male/female mating configuration.
- Covers: ABS UL94HB Gray or Black.
- Hex Inverters: Brass - Nickel Plated.
- Captive Screws: CR Steel - Nickel Plated.



201 SERIES GENDER CHANGER COVERS - DIMENSIONS						
	PART NUMBERS		INCHES [MM]			
Size	BLACK	GRAY	A	B	C	D
9 Position	20109F09F001	20109F09F003	2.083 [52.91]	1.311 [33.30]	0.984 [24.99]	0.657 [16.69]
15 Position	20115F15F001	20115F15F003	2.047 [51.99]	1.653 [41.99]	1.312 [33.32]	0.630 [16.00]
25 Position	20125F25F001	20125F25F003	2.087 [53.01]	2.165 [54.99]	1.852 [47.04]	0.646 [16.41]



	PART NUMBERS		INCHES [MM]					
Size	BLACK	GRAY	A	B	C	D	E	F
9 Position to 15	20109F15F001	20109F15F003	2.067 [52.50]	1.614 [41.00]	1.299 [32.99]	1.312 [33.32]	0.984 [24.99]	0.630 [16.00]
9 Position to 25	20109F25F001	20109F25F003	2.040 [51.82]	2.204 [55.98]	1.339 [34.01]	1.852 [47.04]	0.984 [24.99]	0.670 [17.02]



Other 201 Series Hardware Configurations Available.
Consult Factory